

PRO SERIES

AMB 2000 HIGH PERFORMANCE UNDERLAY

TECHNICAL DATA SHEET GENERAL INSTALLATION INSTRUCTIONS & WARRANTY

Pro Series AMB 2000 is a commercial grade high density acoustical underlayment providing up to 100% RH moisture control and a premium bonding surface for multiple flooring types. The Metropolitan Technical Services team is available to consult on your flooring project. Contact the team at techserv@metrofloors.com.

SUITABLE SUBSTRATES

- **Concrete** - up to internal 100% RH, pH 12
- **Concrete backer board**
- **Gypsum Underlayment** - when using the method of gluing underlayment to primed substrate
- **Wood** - Interior OSB or plywood
- **Existing Flooring** - Resilient flooring and secure vinyl (not cushion-back), wood, terrazzo
- **Radiant Heat** - Surface temperatures of heated floor systems should always stay in the range of 65 F (18 F) to 85 F (29 C) for vinyl floors and laminate. For wood floors 65 F (18 F) to 82 F (28 C). Radiant heat flooring systems must be installed per manufacturer's instructions. The system you select should have an in floor sensor that will accurately read the temperature in your floor and have an adjustable thermostat. Chosen system must be compatible with floating or glue down engineered hardwood, laminate or luxury vinyl tile.

JOB SITE CONDITIONS / STORAGE & HANDLING / ACCLIMATION

- Store material in an upright standing position at all times.
- Intended for interior applications in residential and light-duty commercial applications. Permanent HVAC should be operational with all areas fully enclosed and weathertight. AMB-2000 should be acclimated and maintained at the same temperature before, during and after installation as recommended by the Kentwood, Evoke and other flooring manufacturer's installation guides. Temperatures for acclimation and heated floor systems should always stay in the range of 65 F (18 C) to 85 F (29 C) for vinyl and laminate. 65F (18 C) to 82F (28C) for wood. Consult the flooring manufacturer's installation instructions for recommended ranges. UV glass and/or window coverings should be used to prevent excessive heat buildup on the floor.
- Acclimate underlayment an adequate time to assure the materials and job site conditions are of equal temperature. Prior to installation roll out underlayment to allow the product to relax and lay flat.



MULTIPLE METHOD CHART

	Engineered Hardwood	Laminate without pad attached	Glue down LV	Carpet Tile
Method #1 AMB Floats: Flooring is glued to AMB	✓		✓	✓
Method #2 AMB Floats; Flooring is floated over	✓	✓		
Method #3 AMB is glued to subfloor; flooring is glued to AMB	✓		✓	✓

ALL INSTALLATIONS

- Multiple methods may be used to install AMB 2000 depending upon the flooring type and job site conditions.
- Pro Series AMB 2000 is installed gray side up.
- When adhering Pro Series AMB 2000 to a concrete substrate, use Speed Spray65 to bond Pro Series AMB2000 to the substrate, concrete floor must not exceed 98% RH and 11PH. If the substrate exceeds 98% RH a floating installation is recommended.
- Use only Metropolitan approved adhesives with Pro Series AMB 2000. When bonding LV to the surface of Pro Series AMB 2000 with Speed Spray65, use the "Bonding" spray method (150 sqft to 185 sqft per can). With the Double Stick Installation Method use the light spray pattern (300 sqft to 370 sqft per can) to bond Pro Series AMB 2000 to the substrate.

ADHESIVE AND TAPE CHART

Bond to Pro Series AMB 2000 Surface	Adhesive Options for glue down products					Tape Required for moisture control			Double Stick Option/Bond Pro Series AMB 2000 to substrate. Speed Spray65 Light Spray Method
	Product Name	Timber Bond Pro	Ever Bond Super	Pro Series Releaseable	Pro Series Hard Set	Speed Spray65/ Bonding Spray Pattern	Tape Options		
						Pro Series AMB 2000 Moisture Seal Double Sided 2" Tape	Pro Series AMB 2000 Moisture Seal Double Sided 1.5" Tape	Pro Series AMB 2000 Moisture Seal Single Sided 1.5" Tape	
Kentwood Engineered Wood	✓							✓	✓
Abode Engineered Wood	✓							✓	✓
Evoke Montane Laminate (Canada)								✓	✓
Evoke Promenade Laminate								✓	✓
Evoke Junction Laminate (Canada)								✓	✓
Evoke Surge								✓	✓
Evoke Structure LVP									✓
Evoke Main Street LVP				✓		✓	✓		✓
Evoke Main Street 4.5 LVP				✓		✓	✓		✓
Evoke Main Street 2.5 LVP			✓		✓	✓	✓		✓
Evoke Main Street 2 LVP			✓		✓	✓	✓		✓
Evoke Anchor LVP			✓		✓	✓	✓		✓
Evoke Pillar			✓		✓	✓	✓		✓

Do not use Pro Series AMB 2000 with any product with a pad attached.

Please Reference AMB 2000 Special Instructions - Luxury Vinyl in Above Grade Installations.

For areas where Kentwood engineered wood floors directly abut another floor covering type, such as tile, carpet or vinyl:

- Apply a 6" wide band of adhesive between the subfloor and AMB 2000 using a 1/16" x 1/16" x 1/16" square notched trowel.
- Use the same urethane that was used to adhere the flooring to the AMB 2000.
- Using a hand roller, roll over the AMB to assure a good bond and eliminate any air pockets.
- In instances where AMB is not running perpendicular to the direction of the floor-covering, apply tongue and groove adhesive to the groove, 2 planks on either side of the AMB seam.

METHODS #1 & #2 - FLOATING INSTALLATIONS

1. First Row: Roll out AMB 2000 onto subfloor. Trim to size, maintaining the required expansion space at all vertical obstacles.



2. Second Row: Roll out another section of AMB 2000, tightly abutting the side edges to one another. Leave no gaps and do not overlap edges. Seal the seam using a continuous piece of MST tape. Use a hand roller along the entire length of the seam to ensure a complete bond of the tape to the underlay. Use a push broom to work out any air pockets and flatten the AMB to the subfloor. **MST tape with Luxury Vinyl installations is only required on or below grade concrete.**



3. Repeat for subsequent rows.

4. AMB 2000 may also be double-cut for highly accurate seaming.



FOR LVT AND CARPET TILE INSTALLATIONS

1. Do not install a pad-attached flooring product over AMB 2000.
2. Use Pro Series AMB 2000 Moisture Seal Double Sided Tape 2" SKU# 3114108 or 1.5" SKU# 3122153 at seams. Roll tape out according to instructions above.
3. Remove releasable paper from the double sided tape.
4. When troweling adhesive over Pro Series AMB 2000, also trowel directly over the exposed tape to achieve a full coverage of adhesive.

METHOD #3 - DOUBLE-STICK INSTALLATIONS

All Installations

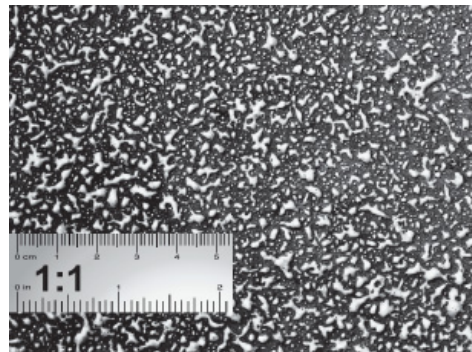
1. Do not install a pad-attached flooring product over Pro Series AMB 2000.
2. Butt side edges to one another. Leave no gaps, do not overlap edges.
3. Pro Series AMB 2000 is a nonporous surface. Follow the adhesive instructions for installations over nonporous substrates.

**Spray pattern for bonding Pro Series AMB 2000 to the substrate
"Light Spray Method"**



**300 - 370 sqft
Per Can**

**Spray pattern for bonding Evoke Glue Down LV to Pro Series AMB 2000
"Bonding Spray Method"**



**150 - 185 sqft
Per Can**

- Pro Series AMB 2000 should be installed perpendicular to direction of finished flooring. To assure a tight short-end seam fit, double cut Pro Series AMB 2000.
- For floating systems, allow a minimum of 3/16" expansion space around all vertical obstacles, including base cabinets. Or flooring manufactures required expansion space.
- Additional expansion space may be needed according to Kentwood, Evoke or the manufacturer's installation instructions.
- Do not compress the underlayment and flooring with tightly abutting transition strips or other flooring material.
- When moving appliances or heavy objects, use air-powered appliance movers or place a plywood panel over the floor and walk the object into place. Do not use flimsy material such as cardboard.

ADHESIVE & PRO SERIES AMB 2000

Use only Metropolitan approved adhesives as outlined in the chart on page 2

Product Specifications					
Name	SKU #	Thickness	Dimensions	Length	Square Footage
Pro Series AMB 2000	3115174	.070"	6'	65.62'	393.96
Pro Series AMB 2000 Baby Roll	3112439	.070"	2.95'	32.8'	96.87
AMB 2000 Moisture Seal Double Sided	3114108	4.4 mils	2"	164'	
AMB 2000 Moisture Seal Double Sided	3122153	4.4 mils	1.5"	164'	
AMB 2000 Moisture Seal Single Sided	3119664	4.4 mils	1-7/8"	164'	

ECO ATTRIBUTES

- PFI (Phthalate-Free Inputs)
- Reusable
- 100% Virgin Material
- Contributes to good indoor air quality: GREENGUARD Gold certified and CA Section 01350 compliant.



WARRANTY

This warranty applies to Pro Series AMB 2000 and is issued to the owner of the property in which the original installation took place.

- AMB 2000 is warranted to be free of manufacturing defects that would adversely affect its performance for a period of 10 years when properly installed according to manufacturer's written installation instructions.
- Pro Series AMB 2000 is warranted to not discolor flooring installed on top of it.
- Pro Series AMB 2000 is warranted to not crumble, peel or disintegrate.
- AMB 2000 is warranted to protect the flooring products installed on top of it from damage caused by moisture vapor emissions from the subfloor/bottom-up up to a maximum 100% RH, as measured by latest version of ASTM F2170, for a period of 10 years when properly installed according to manufacturer's written installation instructions.

EXCLUSIONS

- Seam show through/telegraphing/shadow effect.
- Damage caused by flooding of the floor or top/down moisture exposure to the finished floor.
- Excessive vapor/moisture/pH above stated limits.
- Deformation due to dimensionally unstable flooring or substrates which could include gapping, cupping, curling, doming, or issues arising from inadequate acclimation or temperate variants outside of manufacturer's stated limits.
- Bonding issues when our required adhesives are not used or are used improperly. •Damage or indentation to the finished floor and underlayment due to weight loads either rolling, moving or stationary or by improper maintenance procedures.
- Damage to the finished floor due to improper subfloor preparation or damage of any kind when installation guidelines were not followed.
- Labor or related expenses incurred to replace or repair product that has been installed with evident defects.
- If installing near a fireplace or stove, use a fire-back or fire-retardant mat to protect the area in front of the fireplace from direct heat.

OUR REMEDY

If a product is found to be a manufacturing defect or otherwise fails to perform as warranted, the following remedy coverage is offered:

WITH IN ONE YEAR OF PURCHASE

If a valid claim is filed within one year of the date of purchase, Pro Series will at its sole discretion either repair the material or replace the defective portion with new material of the same or similar quality and visual at no charge to the customer. Repair or replacement of the flooring is limited to colors and styles of available flooring available at the time of repair or replacement. If the original pattern/design/color is not available from the original manufacturer, a reasonable substitute will be offered. If the original installation was performed by a professional installer, Pro Series will also pay reasonable/usual labor costs to repair or replace AMB 2000 and the flooring. Coverage does not include the costs of tear-out, disposal fees, concrete or foundation work, furniture removal and replacement, plumbing or electrical costs, appliance remove/replace or related expenses.

BEYOND ONE YEAR AND UP TO 10 YEARS

If a valid claim is filed beyond one year and up to 10 years, the claim will be prorated/adjusted based upon the number of months since its original installation. Pro Series will at its sole discretion either repair the material or replace the defective portion with new material of the same or similar quality and visual or provide prorated remuneration to the customer. Repair or replacement of the flooring is limited to colors and styles of available flooring available at the time of repair or replacement. If the original pattern/design/color is not available from the original manufacturer a reasonable substitute will be offered. If the original installation was performed by a professional installer, Pro Series will also pay reasonable/usual labor costs to repair or replace AMB 2000 and the flooring. Coverage does not include the costs of tear-out, disposal fees, concrete or foundation work, furniture removal and replacement, plumbing or electrical costs, appliance remove/replace or related expenses.

WHAT TO DO IN CASE OF A CLAIM

In the event of a warranty claim, Pro Series reserves the right to inspect the affected floor, underlayment and associated sundries at job site prior to any repair or replacement. This may include moisture testing. Your claim must be received and evaluated by us before any repair or replacement work is performed; otherwise, this warranty will be null and void. Furniture removal and replacement, plumbing or electrical costs, appliance remove/replace or related expenses.

**THERE ARE NO OTHER WARRANTIES BEYOND THIS EXPRESS WRITTEN WARRANTY.
ALL OTHER WARRANTIES, INCLUDING WARRANTIES OF MERCHANTABILITY OR SUITABILITY
FOR A PARTICULAR PURPOSE ARE EXCLUDED.**

Pro Series, its distributors and retailers assume no liability for indirect loss of use, special, incidental, consequential or other damages of any kind, no matter the cause. Examples of consequential or incidental damages are the replacement of subfloors, trim or moldings, appliances or fixtures or the moving of furniture. In any case, this warranty will not cover or pay for any loss, expense, damage or loss of profit arising from inability to use the floor or premises. Some states or provinces do not allow the exclusion or limitation of incidental damages and this exclusion may not apply. You may have other legal rights that vary from state to state or province to province.



METROPOLITAN

SINCE 1992

AMB 2000 HIGH PERFORMANCE UNDERLAY
for Engineered Hardwood, Laminate, Vinyl, Carpet & Multi-Layer Flooring